



EAN:	4013288194558	Size:	305x125x50 mm
Part number:	05136469001	Weight:	457 g
Article number:	9420	Country of origin:	CN
		Customs tariff number:	42029298

- Robust, rigid material
- Strong hook and loop fastener system prevents unintentional opening and loss of the tool
- Compact design for space-saving storage
- Low weight for easy transport
- Compatible with Wera 2go

Robust textile box for space-saving tool storage; ideal for mobile use, as the material used is light and firm; for 8100 SC Zyklop Speed ratchet sets, 1/2"; for socket wrench inserts with a length of up to 23mm; empty.

Web link

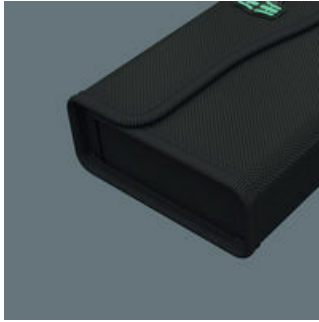
https://products.wera.de/en/zyklop_ratchets_and_accessories_the_zyklop_ratchets_the_zyklop_ratchets_1_2_zyklop_accessories_1_2_9420.html

Wera - 9420
05136469001 - 4013288194558

Wera Werkzeuge GmbH
Korzter Straße 21-25
D-42349 Wuppertal
Tel: +49 (0)2 02 / 40 45-0
E-Mail: info@wera.de

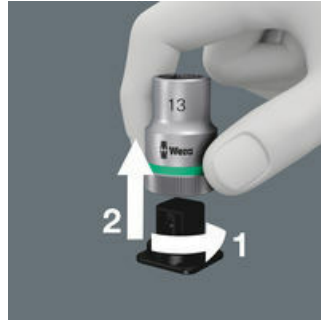
Zyklus Accessories, 1/2"

Robust, light, rigid



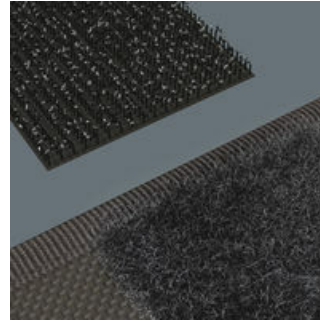
The material used stands out with its high level of robustness. At the same time, the textile box is light and rigid. Even if the textile box falls down, the tools are well protected.

Secure hold and easy removal



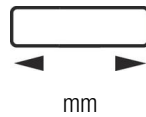
The all new smooth turning mechanism guarantees both secure and rattle-free storage, yet allows easy removal of the tool.

Flexible due to hook and loop fastener strips

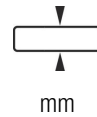


The textile box features a fleece zone at the back. Using the provided self-adhesive hook and loop fastener strips, the textile box can be attached to the Wera 2go components. Or to the wall, shelf or workshop trolley.

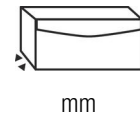
Further versions in this product family:



mm



mm



mm

05136469001	302.0	126.0	50.0
-------------	-------	-------	------

Web link

https://products.wera.de/en/zyklus_ratchets_and_accessories_the_zyklus_ratchets_the_zyklus_ratchets_1_2_zyklus_accessories_1_2_9420.html

Wera - 9420

05136469001 - 4013288194558

Wera Werkzeuge GmbH

Korzter Straße 21-25

D-42349 Wuppertal

Tel: +49 (0)2 02 / 40 45-0

E-Mail: info@wera.de